

SUSTAINABLE
COMMUNITY FORESTRY
PROGRAM



Urban Forest Strike Team Albany, GA Report



Storm Damaged Tree Inventory, Assessment and Recommendations

conducted by:
The Georgia Forestry Commission
03/06/2017

Albany, GA UFST

Tree Inventory, Assessment and recommendations

conducted by: The Georgia Forestry Commission

Table of Contents:

1. Introduction	p. 3
2. Methodology	p. 3
3. Species Composition	p. 4
4. Recommended Maintenance	p. 5
5. General Recommendations	p. 6
6. Comments	p. 7
Appendix	

Albany, GA Tree Damage Report

Introduction

In March of 2017 the City of Albany, GA requested of the Georgia Forestry Commission assistance in determining tree damage and residual risk from the impact of recent severe weather events. Upon further discussion with the City it was determined that the Forestry Commission would conduct a level 1 tree assessment utilizing the International Society of Arboriculture (ISA) standard protocol for basic tree assessment. On March 6th, 7th, and 8th of 2017 with the goal of providing maintenance recommendations for the established trees within and impacting public property Certified Arborists and Community Foresters of the Georgia Forestry Commission's Urban Forest Strike Team conducted a basic tree risk assessment/inventory of storm damaged trees in and impacting the parks and public rights-of-way in sections of Albany, GA.

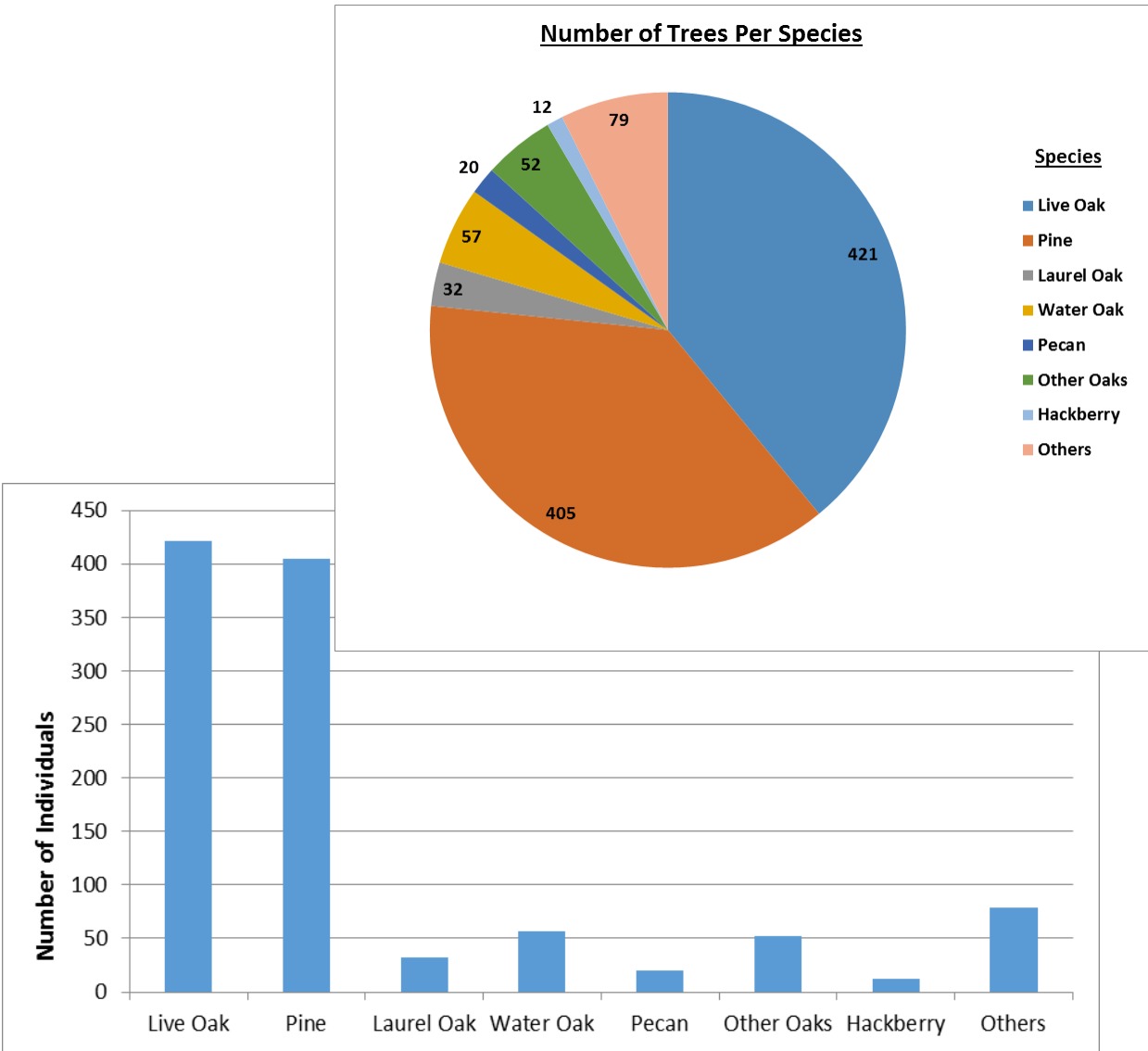
Methodology

Tree assessment was carried out by visually inspecting each established tree (trees greater than 6 inches in diameter) species, diameter at breast height (dbh), and obvious structural issues and defects caused by severe weather events according to a predetermined assessment menu (see appendix) and recording recommendations for mitigation or removal. No invasive diagnostic assessments were conducted (Level 2), and all data was digitally recorded using ARCGIS online computer tablet application and output as an Excel readable CSV file.

Albany, GA Storm Damaged Tree Assessment

Species Composition

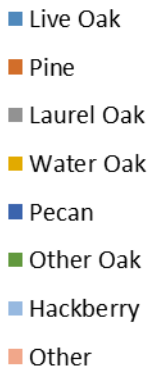
Inspections were limited to the established trees which included 1,082 trees of multiple species. Species composition within the city was dominated by four species: Live oak (*Quercus virginiana*), various species of pine (*Pinus* spp.), Laurel oak (*Quercus laurifolia*) and Water oak (*Quercus nigra*). The remainder of the trees were limited to 20 other species in limited quantities.



Recommended Maintenance

Maintenance recommendations were limited to three categories: Remove, Risk Reduction, or Further Inspection Required. (518) trees were recommended for removal. Pines accounted for over 55% of the trees recommended to be removed, and Live oaks accounted for another 17%. (108) stumps were also identified as requiring removal. (34) trees were designated as requiring further inspection.

Number of Trees for Removal

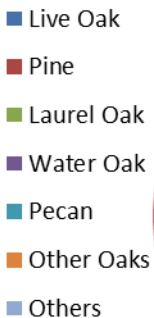


Trees to be Removed by Species

Species	# of Trees	Avg DBH	Median DBH
Live Oak	90	34.1	36
Pine	286	19.7	19
Laurel Oak	13	29.9	32
Water Oak	30	25.6	24
Pecan	11	20.5	20
Other Oak	22	29.4	27.5
Hackberry	9	16.7	14
Other	58	17.1	17

Risk Reduction was recommended for (459) trees. 69% of those recommendations are Live Oaks and 14% are Pines.

Trees Needing Risk Reduction



Species	# of Trees
Live Oak	318
Pine	65
Laurel Oak	32
Water Oak	22
Pecan	1
Other Oaks	9
Others	12

General Recommendations:

The Georgia Forestry Commission recommends the removal of identified high-risk trees as soon as practical. The removal of all trees identified for removal needs to occur as long-term planning and budgets allow to reduce the risk of tree failure. Pruning also needs to take place of noted trees on an ongoing basis. General best management practices need to be employed on all trees remaining trees in the landscape. Soil compaction in tree root zone areas needs to be ameliorated where possible and limited within the root zones of trees to remain on public property.

Conclusions:

Albany is a community with an aging tree canopy, which is often a typical scenario for older communities who have found themselves with growing populations and increasing demands for public space. Near-term removal strategies and long-term maintenance and reestablishment plans are likely needed to minimize the risk associated with trees remaining in the landscape. Tree replacement planning will be needed to ensure species diversity and restore the canopy lost as removals take place.

GFC Sustainable Community Forestry Program

The Sustainable Community Forestry Program of Georgia Forestry Commission is an ongoing program of the State of Georgia providing training, educational programming and technology transfer relative to the care, maintenance and growth of community forests and the benefits they provide.

The Urban Forest Strike Team was composed of a (8) member team of ISA Certified Arborists employed by the Georgia Forestry Commission. The team members were Joe Burgess, Shawn Diddie, Susan Granberry, Seth Hawkins, Mark McClellan, Chuck Norvell, Ryan Phillips, and Joan Scales.

Disclaimer:

The Georgia Forestry Commission accepts no liability for errors within or omissions from this document or the tree assessment. Any observations or recommendations are intended to be used as general recommendations related to the ISA Level 1 visual observation survey conducted in sections of the Albany Historic District and Municipal Golf Course.

Appendix A Assessed Tree Locations – Golf Course



Albany, GA Golf Course



DOP: March 14, 2017

- | | | |
|----------------------|----------------------|------------------------|
| + Prune (>2") | + Stump (Uprooted) | + Stump (Not Attached) |
| + Remove (>50% loss) | + Remove (Heartwood) | |
| + Remove (>30° Lean) | + Not-FEMA 325 | |

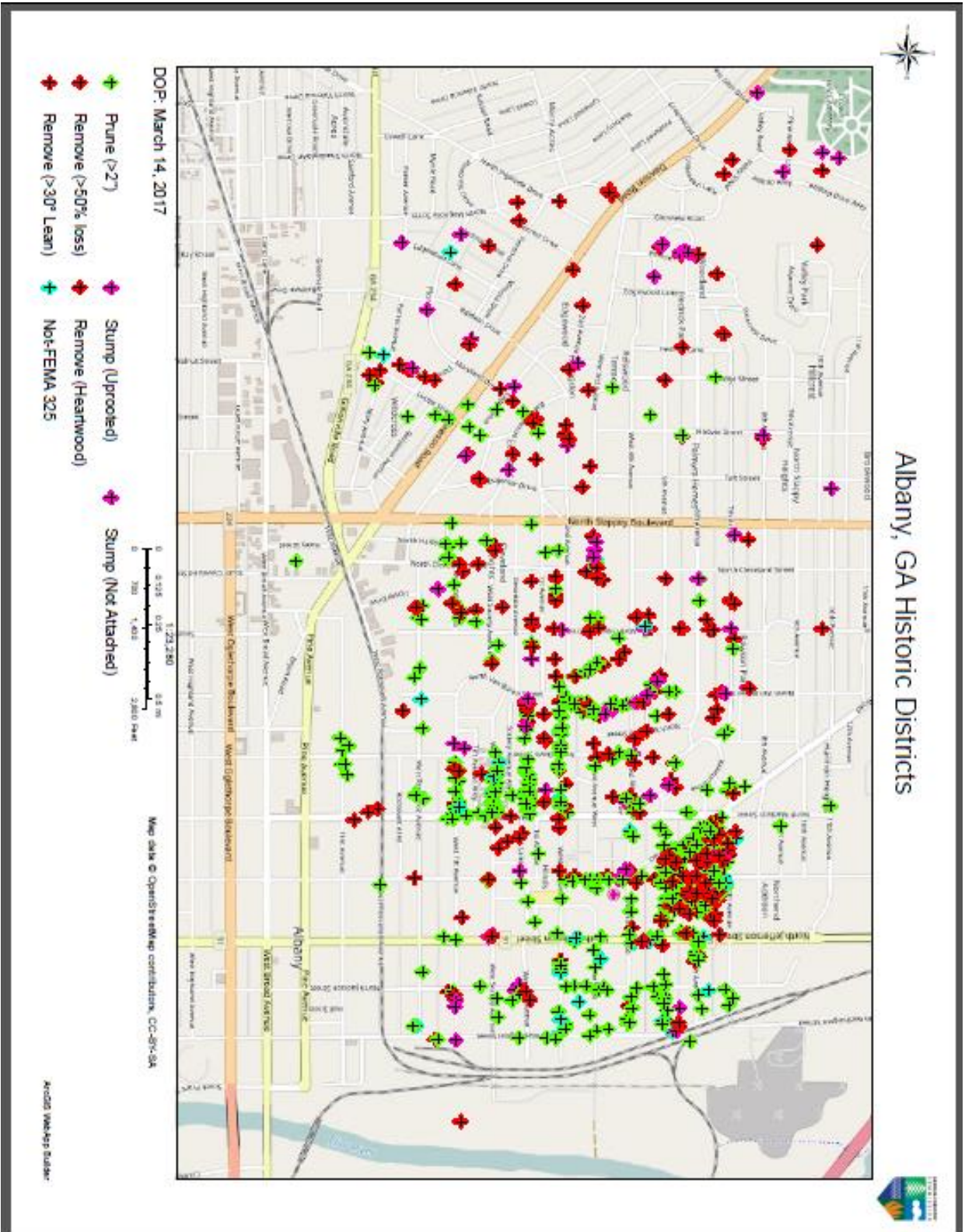


See HERE, Dikoma, Magsynska, © OpenStreetMap contributors, and
 the Open Map Community
 Source: Esri, DigitalGlobe, GeoEye, Earthstar Geographics, CNES/Airbus
 DS, USDA, USDA, AeroGRID, IGN, and the GIS User Community

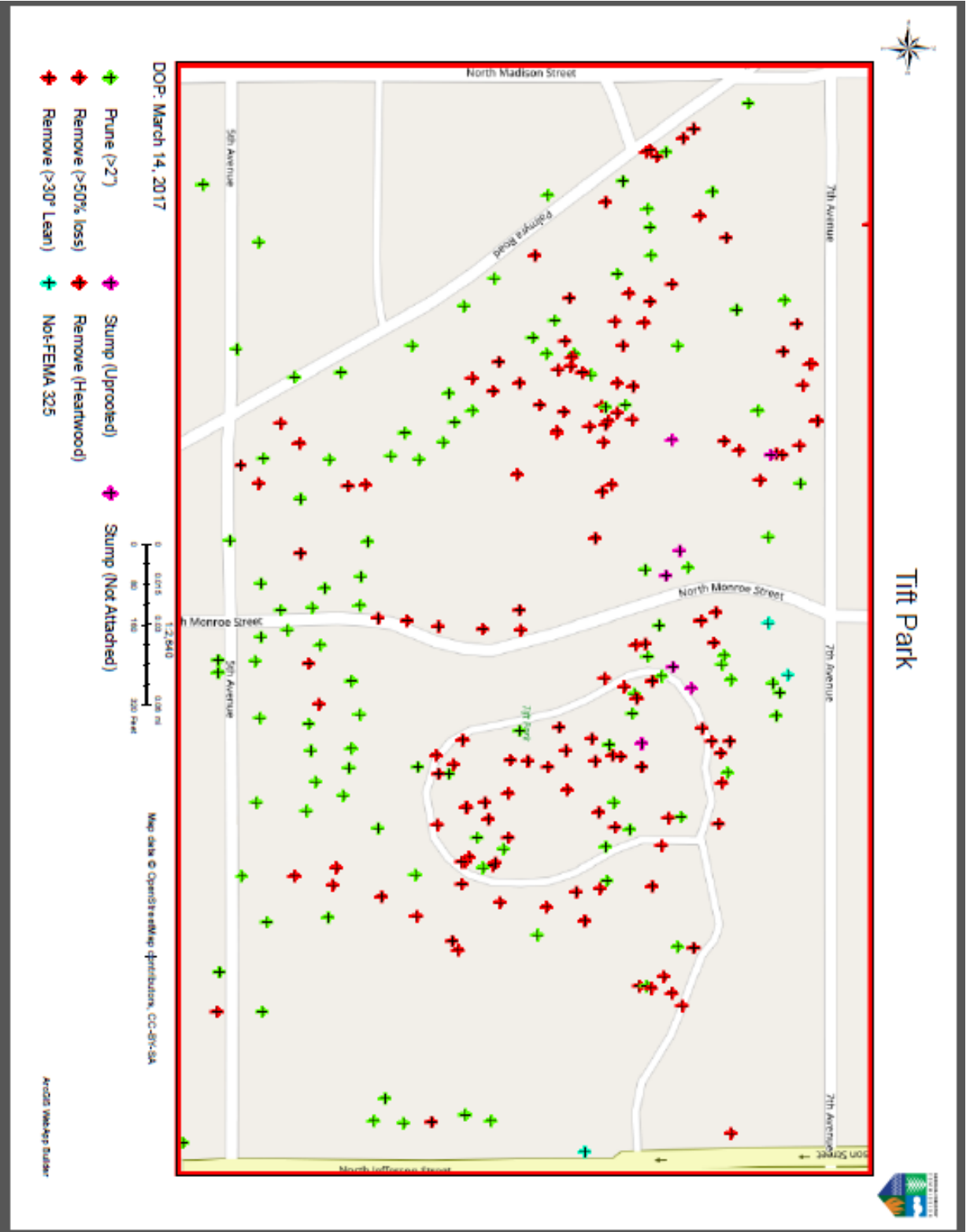
ArcGIS WebApp Builder



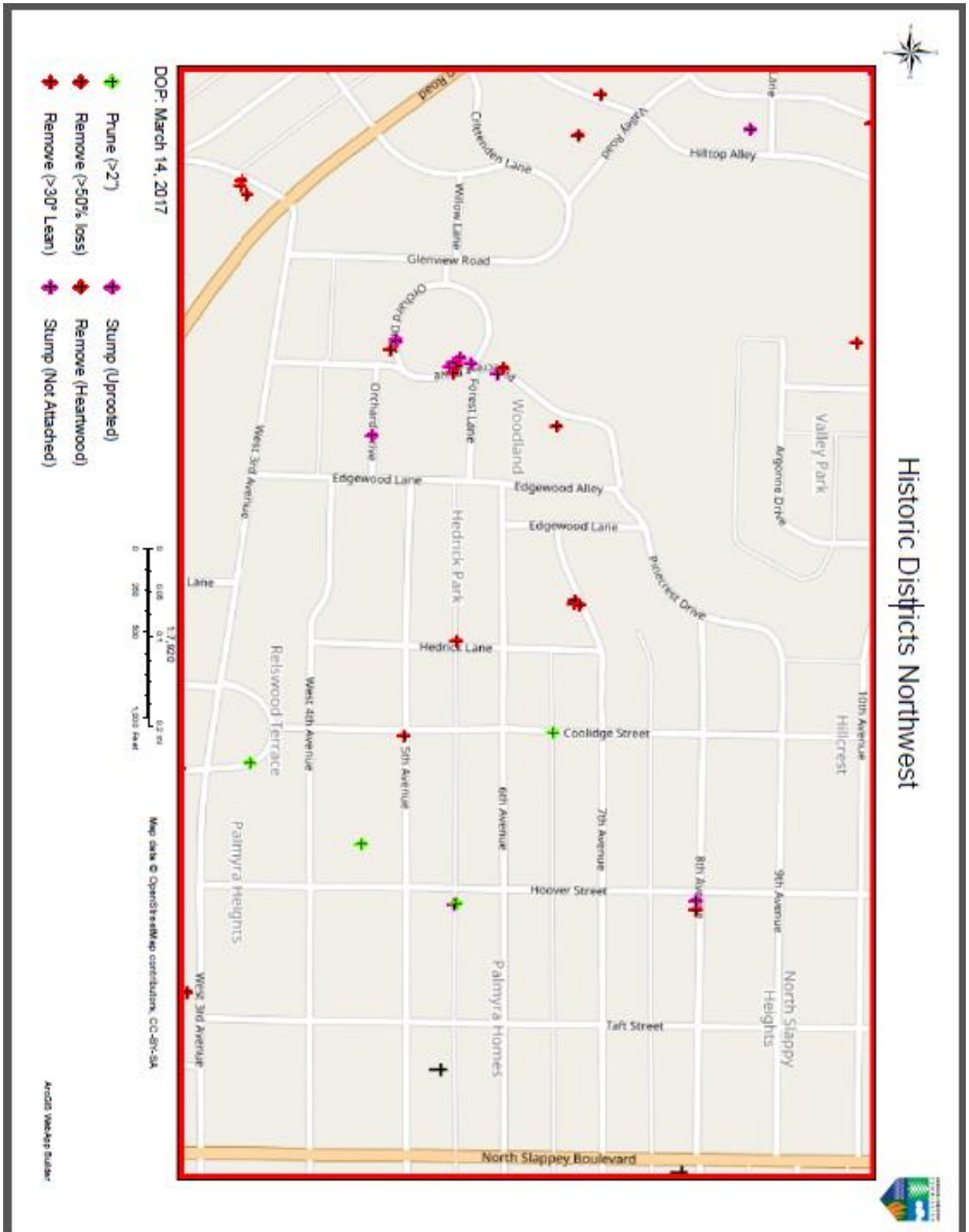
Appendix B: Assessed Tree Locations – Historic District



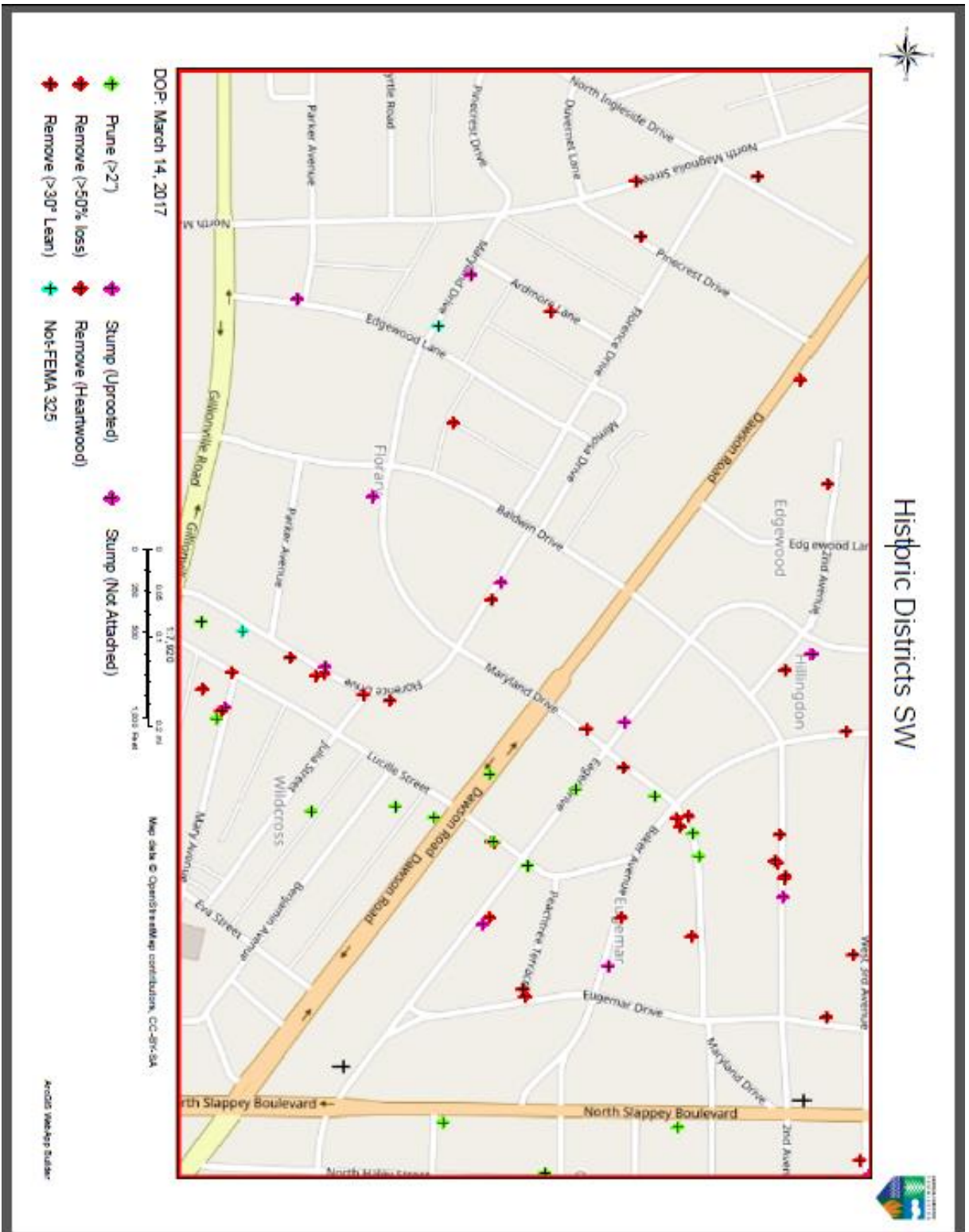
Appendix C: Assessed Tree Locations – Tift Park



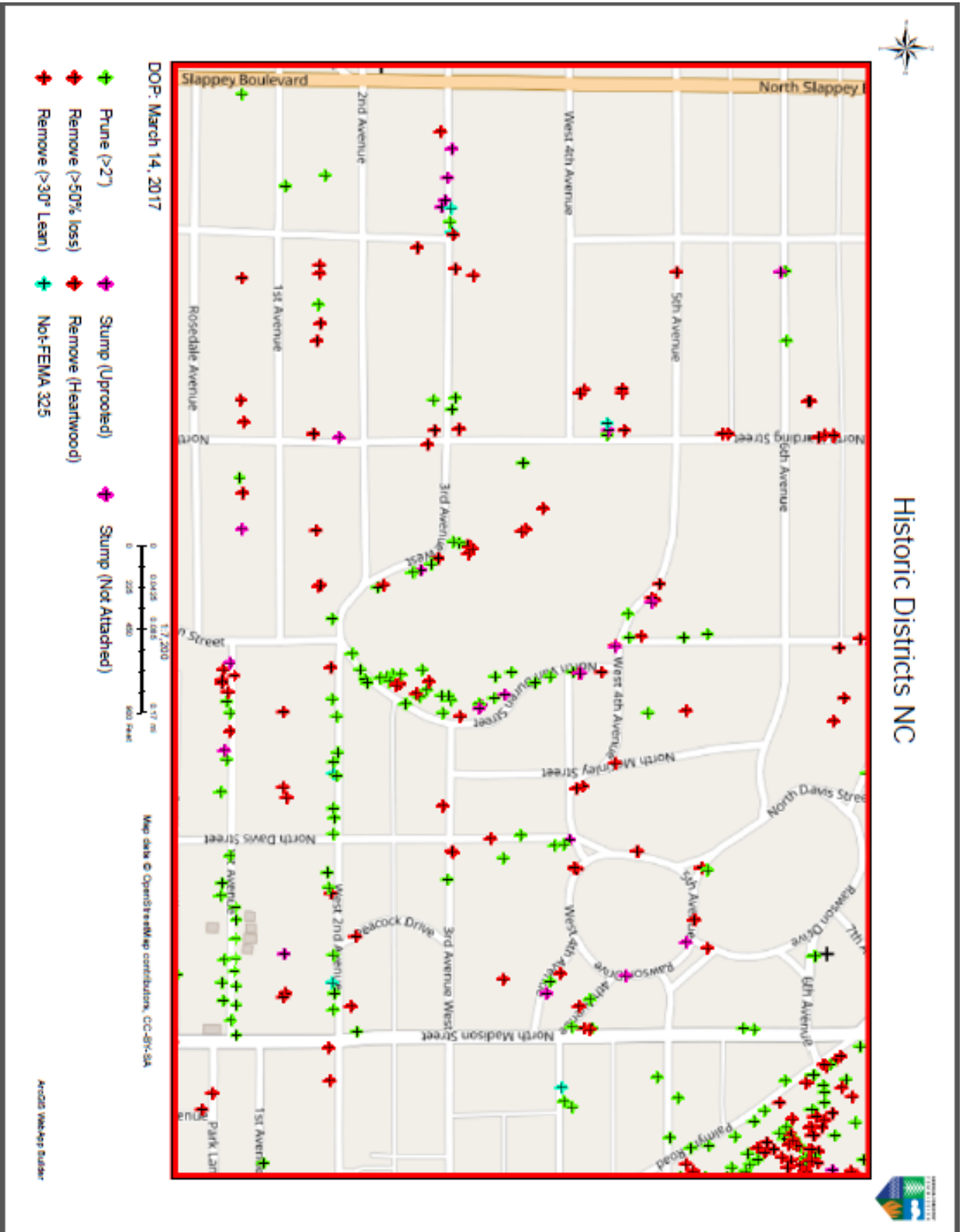
Appendix D: Assessed Tree Locations – Historic District Northwest Section



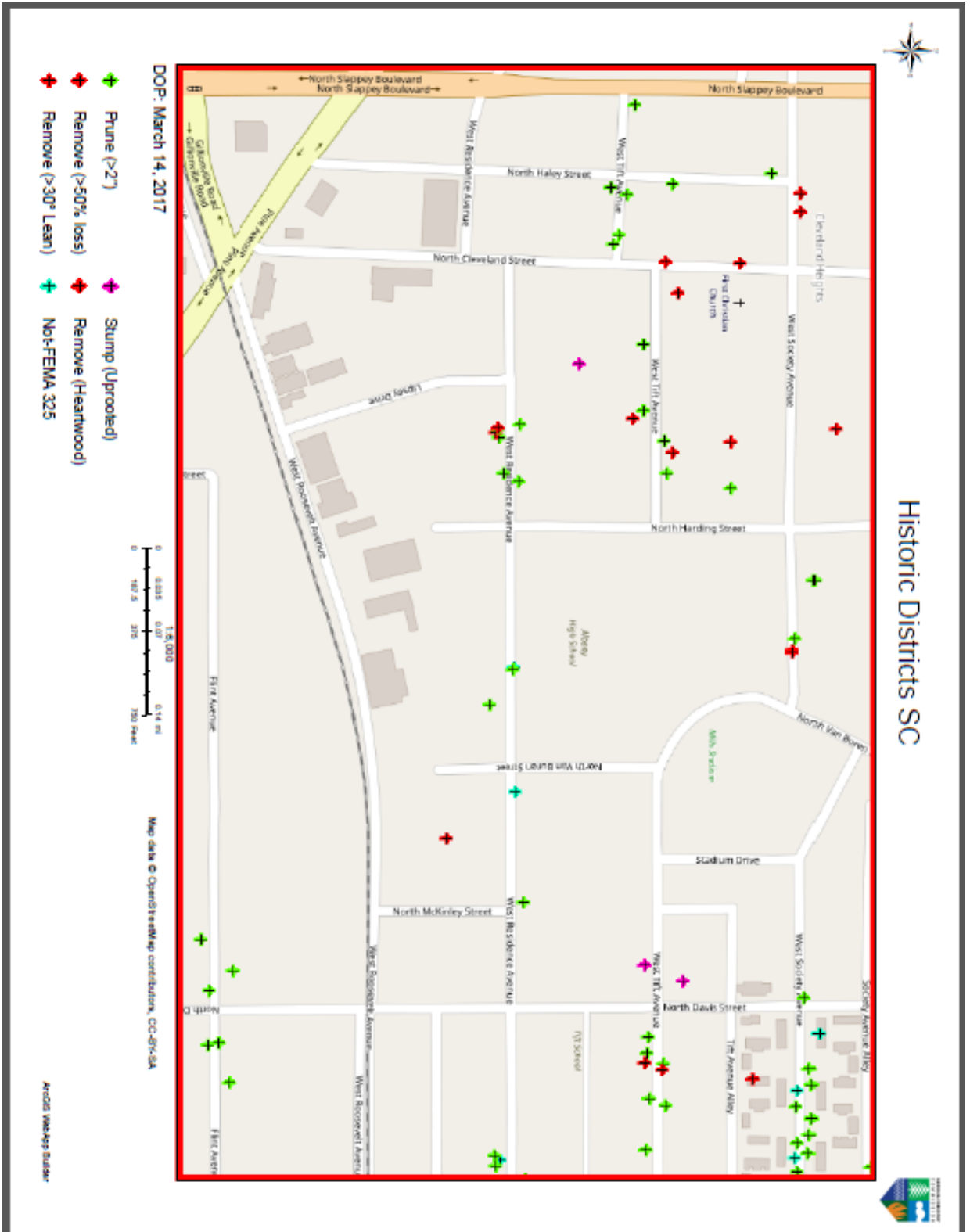
Appendix E: Assessed Tree Locations – Historic District Southwest Section



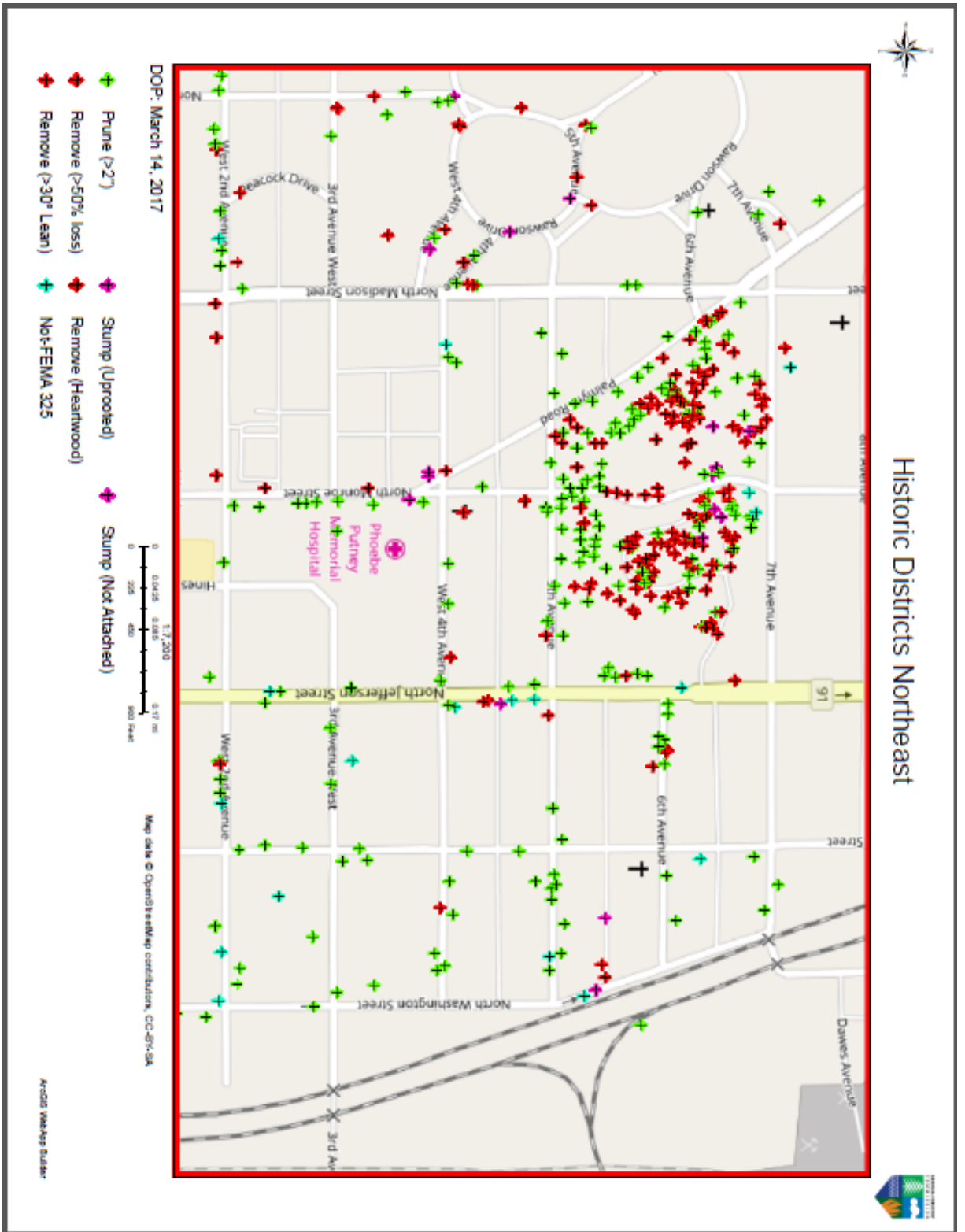
Appendix F: Assessed Tree Locations – Historic District North Central Section



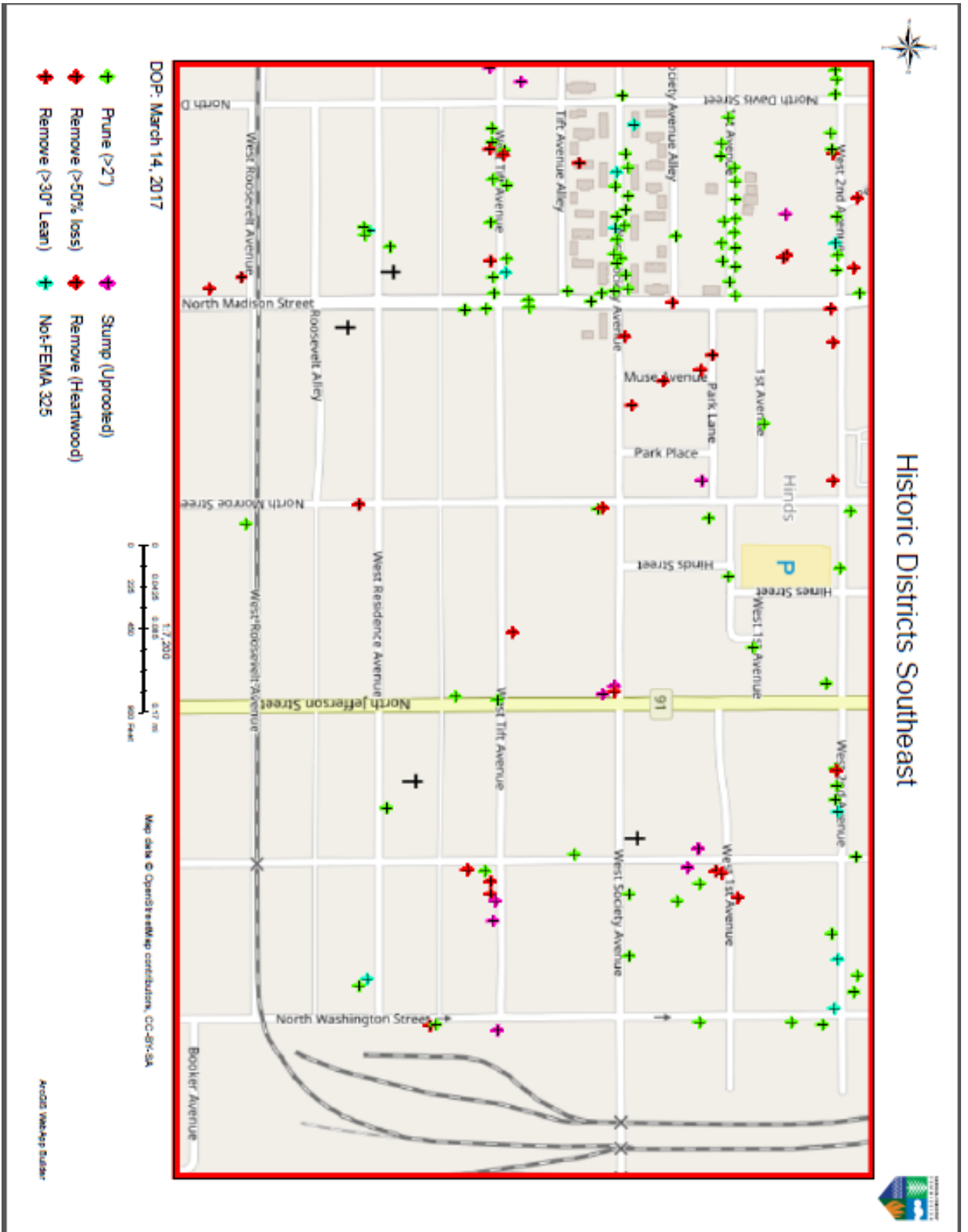
Appendix G: Assessed Tree Locations – Historic District South Central Section



Appendix H: Assessed Tree Locations – Historic District Northeast Section



Appendix I: Assessed Tree Locations – Historic District Southeast Section



Appendix J: Trees Requiring Further City Inspection

Species	DBH	Mitigation	Hangers	Field Notes
Elm, Chinese	35	Not-FEMA 325	0	
Hackberry / Sugarberry	23	Not-FEMA 325	0	
Live oak	45	Not-FEMA 325	0	Vertical crack in stem
Live oak	40	Not-FEMA 325	2 to 4	
Live oak	40	Not-FEMA 325	2 to 4	
Live oak	40	Not-FEMA 325	2 to 4	
Live oak	38	Not-FEMA 325	0	
Live oak	36	Not-FEMA 325	5 to 9	Children playing
Live oak	35	Not-FEMA 325	0	Deadwood and snags
Live oak	34	Not-FEMA 325	0	Deadwood
Live oak	32	Not-FEMA 325	1	
Live oak	31	Not-FEMA 325	0	Deadwood
Live oak	30	Not-FEMA 325	0	Deadwood
Live oak	30	Not-FEMA 325	2 to 4	
Live oak	28	Not-FEMA 325	0	
Live oak	27	Not-FEMA 325	0	
Live oak	27	Not-FEMA 325	0	Cracked root plate
Live oak	24	Not-FEMA 325	2 to 4	
Live oak	24	Not-FEMA 325	2 to 4	
Live oak	22	Not-FEMA 325	2 to 4	
Live oak	18	Not-FEMA 325	0	
Live oak	6	Not-FEMA 325	0	Young tree needs to be reset.
Magnolia spp.	35	Not-FEMA 325	0	
Oak, other	50	Not-FEMA 325	0	
Oak, Southern red	14	Not-FEMA 325	1	Large detached
Oak, water	40	Not-FEMA 325	0	
Oak, water	40	Not-FEMA 325	0	Private tree will fail into ROW
Other	8	Not-FEMA 325	0	
Pecan	<Null>	Not-FEMA 325	NA	
Pecan	24	Not-FEMA 325	0	
Pecan	15	Not-FEMA 325	0	Dead/dying
Pecan	14	Not-FEMA 325	0	
Pecan	10	Not-FEMA 325	0	
Sweetgum	12	Not-FEMA 325	0	

Appendix K: Trees Requiring Risk Reduction

Species	DBH	Mitigation	Hangers	Field Notes
Cedar spp.	23	Prune (>2")	2 to 4	
Cedar spp.	23	Prune (>2")	2 to 4	
Cedar spp.	18	Prune (>2")	2 to 4	
Cedar spp.	18	Prune (>2")	2 to 4	
Cedar spp.	13	Prune (>2")	2 to 4	
Cedar spp.	13	Prune (>2")	2 to 4	
Elm, winged	23	Prune (>2")	5 to 9	
Elm, winged	23	Prune (>2")	5 to 9	
Laurel oak	36	Prune (>2")	1	
Laurel oak	36	Prune (>2")	1	
Laurel oak	36	Prune (>2")	1	
Laurel oak	36	Prune (>2")	1	
Laurel oak	30	Prune (>2")	1	
Laurel oak	30	Prune (>2")	1	
Laurel oak	28	Prune (>2")	2 to 4	
Laurel oak	28	Prune (>2")	2 to 4	
Laurel oak	27	Prune (>2")	2 to 4	
Laurel oak	27	Prune (>2")	2 to 4	
Laurel oak	25	Prune (>2")	1	
Laurel oak	25	Prune (>2")	1	
Laurel oak	22	Prune (>2")	2 to 4	
Laurel oak	22	Prune (>2")	2 to 4	
Laurel oak	18	Prune (>2")	1	
Laurel oak	18	Prune (>2")	1	
Laurel oak	17	Prune (>2")	1	
Laurel oak	17	Prune (>2")	1	
Laurel oak	16	Prune (>2")	2 to 4	
Laurel oak	16	Prune (>2")	2 to 4	
Laurel oak	14	Prune (>2")	2 to 4	
Laurel oak	14	Prune (>2")	2 to 4	
Laurel oak	14	Prune (>2")	2 to 4	
Laurel oak	14	Prune (>2")	2 to 4	
Laurel oak	12	Prune (>2")	2 to 4	
Laurel oak	12	Prune (>2")	1	
Laurel oak	12	Prune (>2")	1	
Laurel oak	12	Prune (>2")	2 to 4	
Laurel oak	12	Prune (>2")	1	
Laurel oak	12	Prune (>2")	1	
Laurel oak	9	Prune (>2")	1	
Laurel oak	9	Prune (>2")	1	
Live oak	68	Prune (>2")	1	
Live oak	65	Prune (>2")	2 to 4	Large branches hanging over sidewalk
Live oak	65	Prune (>2")	2 to 4	Large branches hanging over sidewalk

Appendix K: Trees Requiring Risk Reduction

Species	DBH	Mitigation	Hangers	Field Notes
Live oak	65	Prune (>2")	0	
Live oak	65	Prune (>2")	2 to 4	
Live oak	62	Prune (>2")	2 to 4	
Live oak	60	Prune (>2")	2 to 4	
Live oak	60	Prune (>2")	2 to 4	
Live oak	60	Prune (>2")	1	
Live oak	58	Prune (>2")	2 to 4	
Live oak	55	Prune (>2")	1	
Live oak	52	Prune (>2")	2 to 4	
Live oak	52	Prune (>2")	0	
Live oak	52	Prune (>2")	0	
Live oak	51	Prune (>2")	0	
Live oak	51	Prune (>2")	1	
Live oak	50	Prune (>2")	0	
Live oak	50	Prune (>2")	0	
Live oak	50	Prune (>2")	2 to 4	
Live oak	49	Prune (>2")	2 to 4	
Live oak	49	Prune (>2")	1	
Live oak	48	Prune (>2")	2 to 4	
Live oak	48	Prune (>2")	2 to 4	
Live oak	48	Prune (>2")	1	
Live oak	48	Prune (>2")	2 to 4	
Live oak	48	Prune (>2")	0	
Live oak	47	Prune (>2")	5 to 9	
Live oak	46	Prune (>2")	0	
Live oak	46	Prune (>2")	2 to 4	
Live oak	46	Prune (>2")	2 to 4	
Live oak	46	Prune (>2")	2 to 4	
Live oak	45	Prune (>2")	0	
Live oak	45	Prune (>2")	0	
Live oak	45	Prune (>2")	1	
Live oak	45	Prune (>2")	1	
Live oak	45	Prune (>2")	2 to 4	
Live oak	45	Prune (>2")	1	
Live oak	45	Prune (>2")	2 to 4	
Live oak	45	Prune (>2")	1	
Live oak	45	Prune (>2")	2 to 4	
Live oak	44	Prune (>2")	0	
Live oak	44	Prune (>2")	2 to 4	
Live oak	44	Prune (>2")	5 to 9	
Live oak	44	Prune (>2")	1	
Live oak	44	Prune (>2")	2 to 4	
Live oak	44	Prune (>2")	0	
Live oak	44	Prune (>2")	5 to 9	

Appendix K: Trees Requiring Risk Reduction

Species	DBH	Mitigation	Hangers	Field Notes
Live oak	40	Prune (>2")	2 to 4	
Live oak	40	Prune (>2")	2 to 4	
Live oak	40	Prune (>2")	5 to 9	
Live oak	40	Prune (>2")	2 to 4	
Live oak	40	Prune (>2")	2 to 4	
Live oak	40	Prune (>2")	5 to 9	
Live oak	40	Prune (>2")	2 to 4	
Live oak	39	Prune (>2")	2 to 4	
Live oak	39	Prune (>2")	1	
Live oak	39	Prune (>2")	2 to 4	
Live oak	39	Prune (>2")	2 to 4	
Live oak	39	Prune (>2")	2 to 4	
Live oak	39	Prune (>2")	1	
Live oak	39	Prune (>2")	2 to 4	
Live oak	39	Prune (>2")	0	
Live oak	39	Prune (>2")	0	
Live oak	39	Prune (>2")	0	
Live oak	39	Prune (>2")	2 to 4	
Live oak	38	Prune (>2")	5 to 9	
Live oak	38	Prune (>2")	2 to 4	
Live oak	38	Prune (>2")	5 to 9	Children playing
Live oak	38	Prune (>2")	1	
Live oak	38	Prune (>2")	5 to 9	
Live oak	38	Prune (>2")	2 to 4	
Live oak	38	Prune (>2")	2 to 4	
Live oak	38	Prune (>2")	1	
Live oak	38	Prune (>2")	2 to 4	
Live oak	38	Prune (>2")	2 to 4	
Live oak	38	Prune (>2")	2 to 4	
Live oak	38	Prune (>2")	5 to 9	
Live oak	38	Prune (>2")	2 to 4	
Live oak	38	Prune (>2")	2 to 4	
Live oak	38	Prune (>2")	2 to 4	
Live oak	38	Prune (>2")	2 to 4	
Live oak	38	Prune (>2")	2 to 4	
Live oak	38	Prune (>2")	2 to 4	
Live oak	38	Prune (>2")	1	
Live oak	38	Prune (>2")	2 to 4	
Live oak	38	Prune (>2")	2 to 4	
Live oak	38	Prune (>2")	2 to 4	
Live oak	38	Prune (>2")	5 to 9	
Live oak	38	Prune (>2")	2 to 4	

Appendix K: Trees Requiring Risk Reduction

Species	DBH	Mitigation	Hangers	Field Notes
Live oak	38	Prune (>2")	2 to 4	
Live oak	38	Prune (>2")	0	
Live oak	38	Prune (>2")	0	
Live oak	38	Prune (>2")	0	
Live oak	38	Prune (>2")	2 to 4	
Live oak	38	Prune (>2")	2 to 4	
Live oak	38	Prune (>2")	2 to 4	
Live oak	38	Prune (>2")	2 to 4	
Live oak	38	Prune (>2")	2 to 4	
Live oak	38	Prune (>2")	0	
Live oak	37	Prune (>2")	0	
Live oak	37	Prune (>2")	0	
Live oak	37	Prune (>2")	1	
Live oak	37	Prune (>2")	1	
Live oak	37	Prune (>2")	1	
Live oak	37	Prune (>2")	2 to 4	
Live oak	36	Prune (>2")	2 to 4	
Live oak	36	Prune (>2")	5 to 9	
Live oak	36	Prune (>2")	1	
Live oak	36	Prune (>2")	10+	
Live oak	36	Prune (>2")	1	
Live oak	36	Prune (>2")	2 to 4	
Live oak	36	Prune (>2")	0	
Live oak	36	Prune (>2")	0	
Live oak	36	Prune (>2")	1	
Live oak	36	Prune (>2")	1	
Live oak	36	Prune (>2")	5 to 9	
Live oak	36	Prune (>2")	2 to 4	
Live oak	36	Prune (>2")	2 to 4	
Live oak	35	Prune (>2")	0	
Live oak	35	Prune (>2")	0	
Live oak	35	Prune (>2")	5 to 9	
Live oak	35	Prune (>2")	2 to 4	
Live oak	35	Prune (>2")	2 to 4	
Live oak	35	Prune (>2")	0	
Live oak	35	Prune (>2")	2 to 4	
Live oak	35	Prune (>2")	2 to 4	
Live oak	35	Prune (>2")	2 to 4	
Live oak	35	Prune (>2")	2 to 4	
Live oak	34	Prune (>2")	1	
Live oak	34	Prune (>2")	2 to 4	
Live oak	34	Prune (>2")	5 to 9	
Live oak	34	Prune (>2")	2 to 4	

Appendix K: Trees Requiring Risk Reduction

Species	DBH	Mitigation	Hangers	Field Notes
Live oak	34	Prune (>2")	2 to 4	
Live oak	34	Prune (>2")	1	
Live oak	34	Prune (>2")	2 to 4	
Live oak	34	Prune (>2")	5 to 9	
Live oak	34	Prune (>2")	2 to 4	
Live oak	34	Prune (>2")	2 to 4	
Live oak	34	Prune (>2")	1	
Live oak	34	Prune (>2")	2 to 4	
Live oak	34	Prune (>2")	1	
Live oak	34	Prune (>2")	0	
Live oak	34	Prune (>2")	0	
Live oak	34	Prune (>2")	0	
Live oak	33	Prune (>2")	1	
Live oak	33	Prune (>2")	2 to 4	
Live oak	33	Prune (>2")	0	
Live oak	33	Prune (>2")	1	
Live oak	33	Prune (>2")	1	
Live oak	33	Prune (>2")	0	
Live oak	33	Prune (>2")	5 to 9	
Live oak	32	Prune (>2")	5 to 9	
Live oak	32	Prune (>2")	2 to 4	
Live oak	32	Prune (>2")	0	
Live oak	32	Prune (>2")	2 to 4	
Live oak	32	Prune (>2")	0	
Live oak	32	Prune (>2")	2 to 4	
Live oak	32	Prune (>2")	2 to 4	
Live oak	32	Prune (>2")	1	
Live oak	32	Prune (>2")	2 to 4	
Live oak	32	Prune (>2")	2 to 4	Remove hangers over park
Live oak	32	Prune (>2")	2 to 4	
Live oak	32	Prune (>2")	1	
Live oak	32	Prune (>2")	2 to 4	
Live oak	32	Prune (>2")	0	
Live oak	32	Prune (>2")	2 to 4	
Live oak	31	Prune (>2")	0	
Live oak	31	Prune (>2")	0	
Live oak	31	Prune (>2")	2 to 4	
Live oak	31	Prune (>2")	0	
Live oak	31	Prune (>2")	5 to 9	
Live oak	31	Prune (>2")	0	
Live oak	31	Prune (>2")	2 to 4	
Live oak	30	Prune (>2")	2 to 4	

Appendix K: Trees Requiring Risk Reduction

Species	DBH	Mitigation	Hangers	Field Notes
Live oak	30	Prune (>2")	1	
Live oak	30	Prune (>2")	2 to 4	
Live oak	30	Prune (>2")	2 to 4	
Live oak	30	Prune (>2")	2 to 4	
Live oak	30	Prune (>2")	2 to 4	
Live oak	30	Prune (>2")	2 to 4	
Live oak	30	Prune (>2")	1	
Live oak	30	Prune (>2")	2 to 4	
Live oak	30	Prune (>2")	2 to 4	
Live oak	30	Prune (>2")	2 to 4	
Live oak	30	Prune (>2")	2 to 4	
Live oak	30	Prune (>2")	2 to 4	
Live oak	30	Prune (>2")	2 to 4	
Live oak	30	Prune (>2")	2 to 4	
Live oak	30	Prune (>2")	1	
Live oak	30	Prune (>2")	2 to 4	Consider removal unrelated to storm.
Live oak	30	Prune (>2")	2 to 4	
Live oak	30	Prune (>2")	5 to 9	
Live oak	30	Prune (>2")	2 to 4	
Live oak	30	Prune (>2")	2 to 4	
Live oak	30	Prune (>2")	1	
Live oak	29	Prune (>2")	2 to 4	
Live oak	29	Prune (>2")	10+	
Live oak	29	Prune (>2")	2 to 4	
Live oak	29	Prune (>2")	2 to 4	
Live oak	29	Prune (>2")	1	
Live oak	29	Prune (>2")	2 to 4	
Live oak	29	Prune (>2")	0	
Live oak	29	Prune (>2")	1	
Live oak	28	Prune (>2")	2 to 4	
Live oak	28	Prune (>2")	5 to 9	
Live oak	28	Prune (>2")	1	
Live oak	28	Prune (>2")	2 to 4	
Live oak	28	Prune (>2")	2 to 4	
Live oak	28	Prune (>2")	2 to 4	
Live oak	28	Prune (>2")	2 to 4	
Live oak	28	Prune (>2")	2 to 4	
Live oak	28	Prune (>2")	2 to 4	
Live oak	28	Prune (>2")	2 to 4	
Live oak	28	Prune (>2")	0	
Live oak	28	Prune (>2")	2 to 4	
Live oak	28	Prune (>2")	2 to 4	

Appendix K: Trees Requiring Risk Reduction

Species	DBH	Mitigation	Hangers	Field Notes
Live oak	28	Prune (>2")	2 to 4	
Live oak	27	Prune (>2")	1	Over road
Live oak	27	Prune (>2")	1	Over road
Live oak	27	Prune (>2")	0	Cavity
Live oak	26	Prune (>2")	2 to 4	
Live oak	26	Prune (>2")	2 to 4	
Live oak	25	Prune (>2")	1	
Live oak	25	Prune (>2")	1	
Live oak	25	Prune (>2")	1	
Live oak	25	Prune (>2")	2 to 4	Prune large codom limb.
Live oak	25	Prune (>2")	5 to 9	
Live oak	25	Prune (>2")	1	
Live oak	25	Prune (>2")	1	
Live oak	25	Prune (>2")	1	
Live oak	25	Prune (>2")	1	
Live oak	25	Prune (>2")	0	
Live oak	25	Prune (>2")	2 to 4	
Live oak	24	Prune (>2")	1	
Live oak	24	Prune (>2")	1	
Live oak	24	Prune (>2")	2 to 4	
Live oak	24	Prune (>2")	1	
Live oak	24	Prune (>2")	2 to 4	
Live oak	24	Prune (>2")	1	
Live oak	24	Prune (>2")	2 to 4	
Live oak	24	Prune (>2")	2 to 4	
Live oak	24	Prune (>2")	2 to 4	
Live oak	24	Prune (>2")	0	
Live oak	23	Prune (>2")	2 to 4	
Live oak	23	Prune (>2")	2 to 4	
Live oak	23	Prune (>2")	1	
Live oak	23	Prune (>2")	0	
Live oak	23	Prune (>2")	0	
Live oak	22	Prune (>2")	0	
Live oak	22	Prune (>2")	5 to 9	
Live oak	22	Prune (>2")	2 to 4	
Live oak	22	Prune (>2")	2 to 4	
Live oak	22	Prune (>2")	0	
Live oak	22	Prune (>2")	0	
Live oak	22	Prune (>2")	1	
Live oak	22	Prune (>2")	1	
Live oak	22	Prune (>2")	2 to 4	

Appendix K: Trees Requiring Risk Reduction

Species	DBH	Mitigation	Hangers	Field Notes
Live oak	22	Prune (>2")	0	
Live oak	22	Prune (>2")	2 to 4	
Live oak	21	Prune (>2")	1	
Live oak	21	Prune (>2")	1	
Live oak	21	Prune (>2")	2 to 4	
Live oak	20	Prune (>2")	2 to 4	
Live oak	20	Prune (>2")	0	
Live oak	20	Prune (>2")	2 to 4	
Live oak	19	Prune (>2")	1	
Live oak	19	Prune (>2")	2 to 4	
Live oak	19	Prune (>2")	2 to 4	
Live oak	18	Prune (>2")	1	
Live oak	18	Prune (>2")	2 to 4	
Live oak	17	Prune (>2")	2 to 4	
Live oak	17	Prune (>2")	2 to 4	
Live oak	17	Prune (>2")	2 to 4	
Live oak	17	Prune (>2")	2 to 4	
Live oak	16	Prune (>2")	2 to 4	
Live oak	15	Prune (>2")	1	
Live oak	15	Prune (>2")	0	
Live oak	15	Prune (>2")	1	
Magnolia spp.	34	Prune (>2")	0	
Magnolia spp.	30	Prune (>2")	1	
Magnolia spp.	18	Prune (>2")	1	
Magnolia spp.	17	Prune (>2")	1	
Oak, other	19	Prune (>2")	0	
Oak, Southern red	44	Prune (>2")	0	
Oak, Southern red	39	Prune (>2")	2 to 4	
Oak, Southern red	34	Prune (>2")	0	
Oak, Southern red	34	Prune (>2")	0	
Oak, Southern red	32	Prune (>2")	2 to 4	
Oak, Southern red	26	Prune (>2")	0	
Oak, Southern red	24	Prune (>2")	0	
Oak, Southern red	18	Prune (>2")	1	
Oak, water	47	Prune (>2")	0	
Oak, water	36	Prune (>2")	2 to 4	
Oak, water	32	Prune (>2")	2 to 4	
Oak, water	32	Prune (>2")	2 to 4	
Oak, water	32	Prune (>2")	1	
Oak, water	29	Prune (>2")	2 to 4	
Oak, water	22	Prune (>2")	1	
Oak, water	21	Prune (>2")	5 to 9	
Oak, water	21	Prune (>2")	5 to 9	

Appendix K: Trees Requiring Risk Reduction

Species	DBH	Mitigation	Hangers	Field Notes
Oak, water	20	Prune (>2")	5 to 9	
Oak, water	20	Prune (>2")	2 to 4	
Oak, water	19	Prune (>2")	2 to 4	
Oak, water	18	Prune (>2")	1	
Oak, water	18	Prune (>2")	1	
Oak, water	18	Prune (>2")	2 to 4	
Oak, water	18	Prune (>2")	5 to 9	
Oak, water	14	Prune (>2")	5 to 9	
Oak, water	12	Prune (>2")	1	
Oak, water	12	Prune (>2")	1	
Oak, water	12	Prune (>2")	1	
Oak, water	10	Prune (>2")	2 to 4	
Oak, water	8	Prune (>2")	2 to 4	
Pecan	20	Prune (>2")	2 to 4	
Pine spp.	40	Prune (>2")	1	
Pine spp.	34	Prune (>2")	2 to 4	
Pine spp.	34	Prune (>2")	2 to 4	
Pine spp.	32	Prune (>2")	1	
Pine spp.	32	Prune (>2")	1	
Pine spp.	32	Prune (>2")	1	
Pine spp.	30	Prune (>2")	2 to 4	
Pine spp.	30	Prune (>2")	0	
Pine spp.	29	Prune (>2")	2 to 4	
Pine spp.	28	Prune (>2")	5 to 9	
Pine spp.	28	Prune (>2")	1	
Pine spp.	28	Prune (>2")	1	
Pine spp.	26	Prune (>2")	2 to 4	
Pine spp.	26	Prune (>2")	0	
Pine spp.	25	Prune (>2")	2 to 4	
Pine spp.	25	Prune (>2")	1	
Pine spp.	25	Prune (>2")	0	
Pine spp.	25	Prune (>2")	2 to 4	
Pine spp.	25	Prune (>2")	2 to 4	
Pine spp.	25	Prune (>2")	2 to 4	
Pine spp.	24	Prune (>2")	2 to 4	
Pine spp.	24	Prune (>2")	5 to 9	
Pine spp.	24	Prune (>2")	0	
Pine spp.	24	Prune (>2")	5 to 9	
Pine spp.	23	Prune (>2")	2 to 4	
Pine spp.	23	Prune (>2")	2 to 4	
Pine spp.	22	Prune (>2")	5 to 9	
Pine spp.	22	Prune (>2")	1	

Appendix K: Trees Requiring Risk Reduction

Species	DBH	Mitigation	Hangers	Field Notes
Pine spp.	22	Prune (>2")	1	
Pine spp.	22	Prune (>2")	2 to 4	
Pine spp.	22	Prune (>2")	0	
Pine spp.	22	Prune (>2")	0	
Pine spp.	22	Prune (>2")	1	
Pine spp.	22	Prune (>2")	1	
Pine spp.	21	Prune (>2")	2 to 4	
Pine spp.	20	Prune (>2")	2 to 4	
Pine spp.	20	Prune (>2")	1	Root damage and possible insect.
Pine spp.	20	Prune (>2")	2 to 4	
Pine spp.	20	Prune (>2")	1	
Pine spp.	20	Prune (>2")	0	
Pine spp.	20	Prune (>2")	1	
Pine spp.	20	Prune (>2")	1	
Pine spp.	19	Prune (>2")	2 to 4	
Pine spp.	18	Prune (>2")	1	
Pine spp.	18	Prune (>2")	1	
Pine spp.	18	Prune (>2")	1	
Pine spp.	18	Prune (>2")	2 to 4	
Pine spp.	18	Prune (>2")	1	
Pine spp.	18	Prune (>2")	1	
Pine spp.	18	Prune (>2")	2 to 4	
Pine spp.	18	Prune (>2")	1	
Pine spp.	18	Prune (>2")	1	
Pine spp.	18	Prune (>2")	2 to 4	
Pine spp.	18	Prune (>2")	1	
Pine spp.	18	Prune (>2")	1	
Pine spp.	18	Prune (>2")	2 to 4	
Pine spp.	17	Prune (>2")	0	
Pine spp.	16	Prune (>2")	2 to 4	Has a lean.
Pine spp.	16	Prune (>2")	1	
Pine spp.	16	Prune (>2")	1	
Pine spp.	16	Prune (>2")	1	
Pine spp.	14	Prune (>2")	1	
Pine spp.	14	Prune (>2")	1	
Pine spp.	12	Prune (>2")	2 to 4	
Pine spp.	12	Prune (>2")	0	
Pine spp.	12	Prune (>2")	1	
Pine spp.	12	Prune (>2")	1	

Appendix L: Trees Recommended for Removal

Species	DBH	Mitigation	Hangers	Field Notes
Elm, American	15	Remove (>30° Lean)	0	
Hackberry / Sugarberry	18	Remove (>30° Lean)	0	On ground
Hackberry / Sugarberry	18	Remove (>30° Lean)	0	
Hackberry / Sugarberry	10	Remove (>30° Lean)	0	
Laurel oak	32	Remove (>30° Lean)	0	
Laurel oak	28	Remove (>30° Lean)	0	
Laurel oak	14	Remove (>30° Lean)	0	
Live oak	48	Remove (>30° Lean)	0	
Live oak	40	Remove (>30° Lean)	0	Failed
Live oak	36	Remove (>30° Lean)	0	Failed
Live oak	18	Remove (>30° Lean)	0	
Magnolia spp.	11	Remove (>30° Lean)	0	
Oak, other	24	Remove (>30° Lean)	0	On ground
Oak, other	18	Remove (>30° Lean)	0	Failed
Oak, Southern red	49	Remove (>30° Lean)	0	Failed
Oak, Southern red	34	Remove (>30° Lean)	0	
Oak, Southern red	20	Remove (>30° Lean)	0	
Oak, water	<Null>	Remove (>30° Lean)	0	On ground
Oak, water	36	Remove (>30° Lean)	0	Failed
Oak, water	30	Remove (>30° Lean)	0	Failed
Oak, water	26	Remove (>30° Lean)	0	Failed
Oak, water	23	Remove (>30° Lean)	0	Failed
Oak, water	22	Remove (>30° Lean)	0	Failed
Oak, water	12	Remove (>30° Lean)	0	Failed
Other	18	Remove (>30° Lean)	0	Fail
Other	14	Remove (>30° Lean)	0	
Other	13	Remove (>30° Lean)	0	Black cherry
Other	12	Remove (>30° Lean)	0	Failed
Palms	20	Remove (>30° Lean)	0	
Pecan	30	Remove (>30° Lean)	0	On ground
Pine spp.	35	Remove (>30° Lean)	0	
Pine spp.	32	Remove (>30° Lean)	0	
Pine spp.	30	Remove (>30° Lean)	0	
Pine spp.	30	Remove (>30° Lean)	0	On ground
Pine spp.	30	Remove (>30° Lean)	0	On ground
Pine spp.	30	Remove (>30° Lean)	0	
Pine spp.	30	Remove (>30° Lean)	0	Failed
Pine spp.	28	Remove (>30° Lean)	0	
Pine spp.	28	Remove (>30° Lean)	0	Failed
Pine spp.	28	Remove (>30° Lean)	0	On ground
Pine spp.	28	Remove (>30° Lean)	0	
Pine spp.	27	Remove (>30° Lean)	0	Failed
Pine spp.	25	Remove (>30° Lean)	0	Failed

Appendix L: Trees Recommended for Removal

Species	DBH	Mitigation	Hangers	Field Notes
Pine spp.	25	Remove (>30° Lean)	0	Failed
Pine spp.	25	Remove (>30° Lean)	0	Failed
Pine spp.	25	Remove (>30° Lean)	0	Failed
Pine spp.	25	Remove (>30° Lean)	0	Failed
Pine spp.	24	Remove (>30° Lean)	0	Failed
Pine spp.	24	Remove (>30° Lean)	0	
Pine spp.	24	Remove (>30° Lean)	0	
Pine spp.	22	Remove (>30° Lean)	0	
Pine spp.	22	Remove (>30° Lean)	0	
Pine spp.	21	Remove (>30° Lean)	0	
Pine spp.	21	Remove (>30° Lean)	0	Failed
Pine spp.	20	Remove (>30° Lean)	0	
Pine spp.	20	Remove (>30° Lean)	0	Failed
Pine spp.	20	Remove (>30° Lean)	0	Failed
Pine spp.	20	Remove (>30° Lean)	0	On ground
Pine spp.	20	Remove (>30° Lean)	0	Failed
Pine spp.	20	Remove (>30° Lean)	0	
Pine spp.	20	Remove (>30° Lean)	0	
Pine spp.	18	Remove (>30° Lean)	0	Failed
Pine spp.	18	Remove (>30° Lean)	0	
Pine spp.	18	Remove (>30° Lean)	0	
Pine spp.	18	Remove (>30° Lean)	0	
Pine spp.	18	Remove (>30° Lean)	0	
Pine spp.	18	Remove (>30° Lean)	0	
Pine spp.	17	Remove (>30° Lean)	0	Failed
Pine spp.	17	Remove (>30° Lean)	0	
Pine spp.	16	Remove (>30° Lean)	0	
Pine spp.	16	Remove (>30° Lean)	0	
Pine spp.	14	Remove (>30° Lean)	0	
Pine spp.	14	Remove (>30° Lean)	0	On ground
Pine spp.	13	Remove (>30° Lean)	0	
Pine spp.	13	Remove (>30° Lean)	0	
Pine spp.	12	Remove (>30° Lean)	0	
Pine spp.	12	Remove (>30° Lean)	0	
Pine spp.	10	Remove (>30° Lean)	0	
Pine spp.	10	Remove (>30° Lean)	0	
River Birch	10	Remove (>30° Lean)	0	
Yellow poplar	30	Remove (>30° Lean)	0	Failed
	<Null>	Remove (>50% loss)	0	
Black walnut	21	Remove (>50% loss)	0	
Bradford pear	12	Remove (>50% loss)	0	Failed
Bradford pear	10	Remove (>50% loss)	0	
Cedar spp.	20	Remove (>50% loss)	0	

Appendix L: Trees Recommended for Removal

Species	DBH	Mitigation	Hangers	Field Notes
Cedar spp.	20	Remove (>50% loss)	0	
Cedar spp.	18	Remove (>50% loss)	0	
Cedar spp.	18	Remove (>50% loss)	0	
Cedar spp.	6	Remove (>50% loss)	0	
Cherry-laurel	10	Remove (>50% loss)	0	
Cherry-laurel	6	Remove (>50% loss)	0	
Dogwood	7	Remove (>50% loss)	0	
Dogwood	6	Remove (>50% loss)	0	
Elm, American	20	Remove (>50% loss)	0	
Hackberry / Sugarberry	34	Remove (>50% loss)	0	
Hackberry / Sugarberry	17	Remove (>50% loss)	0	
Hackberry / Sugarberry	14	Remove (>50% loss)	0	
Hackberry / Sugarberry	14	Remove (>50% loss)	0	
Hackberry / Sugarberry	13	Remove (>50% loss)	0	
Hackberry / Sugarberry	12	Remove (>50% loss)	0	
Holly spp.	8	Remove (>50% loss)	0	
Laurel oak	38	Remove (>50% loss)	0	
Laurel oak	34	Remove (>50% loss)	0	
Laurel oak	22	Remove (>50% loss)	1	
Laurel oak	20	Remove (>50% loss)	0	
Live oak	<Null	Remove (>50% loss)	0	
Live oak	50	Remove (>50% loss)	0	
Live oak	48	Remove (>50% loss)	0	
Live oak	48	Remove (>50% loss)	0	
Live oak	46	Remove (>50% loss)	0	
Live oak	46	Remove (>50% loss)	0	
Live oak	45	Remove (>50% loss)	0	
Live oak	44	Remove (>50% loss)	0	
Live oak	42	Remove (>50% loss)	0	
Live oak	40	Remove (>50% loss)	0	
Live oak	40	Remove (>50% loss)	0	
Live oak	40	Remove (>50% loss)	0	
Live oak	40	Remove (>50% loss)	0	
Live oak	40	Remove (>50% loss)	0	
Live oak	40	Remove (>50% loss)	0	
Live oak	40	Remove (>50% loss)	0	
Live oak	40	Remove (>50% loss)	0	
Live oak	40	Remove (>50% loss)	0	
Live oak	40	Remove (>50% loss)	2 to 4	
Live oak	39	Remove (>50% loss)	0	
Live oak	38	Remove (>50% loss)	0	
Live oak	38	Remove (>50% loss)	0	
Live oak	38	Remove (>50% loss)	0	

Appendix L: Trees Recommended for Removal

Species	DBH	Mitigation	Hangers	Field Notes
Live oak	38	Remove (>50% loss)	0	
Live oak	38	Remove (>50% loss)	0	
Live oak	38	Remove (>50% loss)	0	
Live oak	38	Remove (>50% loss)	0	
Live oak	38	Remove (>50% loss)	0	
Live oak	38	Remove (>50% loss)	0	
Live oak	38	Remove (>50% loss)	0	
Live oak	37	Remove (>50% loss)	0	
Live oak	37	Remove (>50% loss)	0	
Live oak	36	Remove (>50% loss)	0	
Live oak	36	Remove (>50% loss)	0	
Live oak	36	Remove (>50% loss)	0	
Live oak	36	Remove (>50% loss)	0	
Live oak	36	Remove (>50% loss)	0	
Live oak	36	Remove (>50% loss)	0	
Live oak	35	Remove (>50% loss)	1	
Live oak	34	Remove (>50% loss)	0	
Live oak	33	Remove (>50% loss)	0	
Live oak	33	Remove (>50% loss)	0	
Live oak	32	Remove (>50% loss)	0	
Live oak	32	Remove (>50% loss)	0	
Live oak	31	Remove (>50% loss)	0	
Live oak	30	Remove (>50% loss)	0	
Live oak	30	Remove (>50% loss)	0	
Live oak	30	Remove (>50% loss)	0	
Live oak	30	Remove (>50% loss)	0	
Live oak	30	Remove (>50% loss)	0	
Live oak	30	Remove (>50% loss)	0	
Live oak	30	Remove (>50% loss)	0	
Live oak	29	Remove (>50% loss)	0	
Live oak	29	Remove (>50% loss)	0	
Live oak	29	Remove (>50% loss)	0	
Live oak	28	Remove (>50% loss)	0	
Live oak	28	Remove (>50% loss)	0	
Live oak	27	Remove (>50% loss)	0	
Live oak	27	Remove (>50% loss)	0	
Live oak	26	Remove (>50% loss)	0	
Live oak	24	Remove (>50% loss)	0	
Live oak	24	Remove (>50% loss)	0	
Live oak	23	Remove (>50% loss)	0	
Live oak	22	Remove (>50% loss)	0	
Live oak	21	Remove (>50% loss)	0	
Live oak	19	Remove (>50% loss)	0	
Live oak	18	Remove (>50% loss)	0	

Appendix L: Trees Recommended for Removal

Species	DBH	Mitigation	Hangers	Field Notes
Live oak	14	Remove (>50% loss)	0	
Live oak	14	Remove (>50% loss)	0	
Live oak	14	Remove (>50% loss)	0	
Magnolia spp.	36	Remove (>50% loss)	0	
Magnolia spp.	32	Remove (>50% loss)	0	
Magnolia spp.	30	Remove (>50% loss)	0	
Magnolia spp.	21	Remove (>50% loss)	0	
Oak, other	38	Remove (>50% loss)	0	
Oak, other	25	Remove (>50% loss)	0	
Oak, other	24	Remove (>50% loss)	0	
Oak, other	18	Remove (>50% loss)	0	
Oak, other	18	Remove (>50% loss)	0	
Oak, other	18	Remove (>50% loss)	0	
Oak, other	9	Remove (>50% loss)	0	
Oak, Southern red	43	Remove (>50% loss)	0	
Oak, Southern red	40	Remove (>50% loss)	0	
Oak, water	45	Remove (>50% loss)	0	Failed
Oak, water	40	Remove (>50% loss)	0	
Oak, water	40	Remove (>50% loss)	0	
Oak, water	38	Remove (>50% loss)	0	
Oak, water	36	Remove (>50% loss)	0	
Oak, water	35	Remove (>50% loss)	0	
Oak, water	28	Remove (>50% loss)	0	
Oak, water	28	Remove (>50% loss)	0	
Oak, water	24	Remove (>50% loss)	0	
Oak, water	24	Remove (>50% loss)	0	
Oak, water	22	Remove (>50% loss)	0	
Oak, water	20	Remove (>50% loss)	0	
Oak, water	19	Remove (>50% loss)	0	
Oak, water	18	Remove (>50% loss)	0	
Oak, water	18	Remove (>50% loss)	0	
Oak, water	17	Remove (>50% loss)	0	
Oak, water	14	Remove (>50% loss)	0	
Oak, water	12	Remove (>50% loss)	0	
Oak, water	8	Remove (>50% loss)	0	
Oak, willow	55	Remove (>50% loss)	0	
Oak, willow	32	Remove (>50% loss)	0	
Other	30	Remove (>50% loss)	0	
Other	28	Remove (>50% loss)	0	Black cherry
Other	25	Remove (>50% loss)	0	
Other	22	Remove (>50% loss)	0	
Other	18	Remove (>50% loss)	0	

Appendix L: Trees Recommended for Removal

Species	DBH	Mitigation	Hangers	Field Notes
Other	16	Remove (>50% loss)	0	Black cherry
Other	14	Remove (>50% loss)	0	
Other	12	Remove (>50% loss)	0	
Other	10	Remove (>50% loss)	0	
Other	8	Remove (>50% loss)	0	
Other	7	Remove (>50% loss)	0	
Other	6	Remove (>50% loss)	0	Black cherry
Pecan	30	Remove (>50% loss)	0	
Pecan	30	Remove (>50% loss)	0	
Pecan	20	Remove (>50% loss)	0	
Pecan	15	Remove (>50% loss)	NA	
Pecan	15	Remove (>50% loss)	NA	
Pecan	13	Remove (>50% loss)	0	
Pecan	12	Remove (>50% loss)	0	
Pecan	11	Remove (>50% loss)	0	
Pine spp.	40	Remove (>50% loss)	0	N
Pine spp.	36	Remove (>50% loss)	0	
Pine spp.	34	Remove (>50% loss)	0	
Pine spp.	31	Remove (>50% loss)	0	
Pine spp.	30	Remove (>50% loss)	0	
Pine spp.	30	Remove (>50% loss)	NA	Private tree will fail into ROW
Pine spp.	30	Remove (>50% loss)	0	
Pine spp.	30	Remove (>50% loss)	0	
Pine spp.	28	Remove (>50% loss)	0	
Pine spp.	28	Remove (>50% loss)	0	
Pine spp.	28	Remove (>50% loss)	0	
Pine spp.	28	Remove (>50% loss)	0	
Pine spp.	27	Remove (>50% loss)	0	
Pine spp.	27	Remove (>50% loss)	0	
Pine spp.	26	Remove (>50% loss)	0	
Pine spp.	26	Remove (>50% loss)	0	
Pine spp.	26	Remove (>50% loss)	0	Failed
Pine spp.	26	Remove (>50% loss)	0	
Pine spp.	26	Remove (>50% loss)	0	
Pine spp.	26	Remove (>50% loss)	0	
Pine spp.	26	Remove (>50% loss)	0	
Pine spp.	26	Remove (>50% loss)	0	
Pine spp.	26	Remove (>50% loss)	0	
Pine spp.	25	Remove (>50% loss)	0	
Pine spp.	25	Remove (>50% loss)	0	
Pine spp.	25	Remove (>50% loss)	0	

Appendix L: Trees Recommended for Removal

Species	DBH	Mitigation	Hangers	Field Notes
Pine spp.	25	Remove (>50% loss)	0	
Pine spp.	25	Remove (>50% loss)	0	
Pine spp.	25	Remove (>50% loss)	0	
Pine spp.	25	Remove (>50% loss)	0	
Pine spp.	25	Remove (>50% loss)	0	
Pine spp.	25	Remove (>50% loss)	0	
Pine spp.	25	Remove (>50% loss)	0	
Pine spp.	25	Remove (>50% loss)	0	
Pine spp.	25	Remove (>50% loss)	0	
Pine spp.	24	Remove (>50% loss)	0	
Pine spp.	24	Remove (>50% loss)	0	
Pine spp.	24	Remove (>50% loss)	0	
Pine spp.	24	Remove (>50% loss)	0	
Pine spp.	24	Remove (>50% loss)	0	
Pine spp.	24	Remove (>50% loss)	0	
Pine spp.	24	Remove (>50% loss)	0	
Pine spp.	24	Remove (>50% loss)	0	
Pine spp.	24	Remove (>50% loss)	0	
Pine spp.	24	Remove (>50% loss)	0	
Pine spp.	24	Remove (>50% loss)	0	On ground
Pine spp.	24	Remove (>50% loss)	0	
Pine spp.	24	Remove (>50% loss)	0	
Pine spp.	24	Remove (>50% loss)	0	
Pine spp.	24	Remove (>50% loss)	0	
Pine spp.	23	Remove (>50% loss)	5 to 9	
Pine spp.	23	Remove (>50% loss)	0	
Pine spp.	22	Remove (>50% loss)	0	
Pine spp.	22	Remove (>50% loss)	0	
Pine spp.	22	Remove (>50% loss)	0	
Pine spp.	22	Remove (>50% loss)	0	
Pine spp.	22	Remove (>50% loss)	0	
Pine spp.	22	Remove (>50% loss)	0	
Pine spp.	22	Remove (>50% loss)	0	
Pine spp.	22	Remove (>50% loss)	0	
Pine spp.	22	Remove (>50% loss)	0	
Pine spp.	22	Remove (>50% loss)	0	
Pine spp.	22	Remove (>50% loss)	0	
Pine spp.	22	Remove (>50% loss)	0	
Pine spp.	22	Remove (>50% loss)	0	
Pine spp.	22	Remove (>50% loss)	0	
Pine spp.	22	Remove (>50% loss)	0	
Pine spp.	22	Remove (>50% loss)	0	On ground
Pine spp.	22	Remove (>50% loss)	0	
Pine spp.	22	Remove (>50% loss)	0	
Pine spp.	21	Remove (>50% loss)	0	

Appendix L: Trees Recommended for Removal

Species	DBH	Mitigation	Hangers	Field Notes
Pine spp.	21	Remove (>50% loss)	0	
Pine spp.	21	Remove (>50% loss)	0	
Pine spp.	20	Remove (>50% loss)	0	
Pine spp.	20	Remove (>50% loss)	0	
Pine spp.	20	Remove (>50% loss)	0	
Pine spp.	20	Remove (>50% loss)	0	
Pine spp.	20	Remove (>50% loss)	0	
Pine spp.	20	Remove (>50% loss)	0	
Pine spp.	20	Remove (>50% loss)	0	
Pine spp.	20	Remove (>50% loss)	0	
Pine spp.	20	Remove (>50% loss)	0	
Pine spp.	20	Remove (>50% loss)	0	
Pine spp.	20	Remove (>50% loss)	0	
Pine spp.	20	Remove (>50% loss)	0	
Pine spp.	20	Remove (>50% loss)	0	
Pine spp.	20	Remove (>50% loss)	0	
Pine spp.	20	Remove (>50% loss)	0	
Pine spp.	20	Remove (>50% loss)	0	
Pine spp.	20	Remove (>50% loss)	0	
Pine spp.	20	Remove (>50% loss)	0	
Pine spp.	20	Remove (>50% loss)	0	
Pine spp.	20	Remove (>50% loss)	0	
Pine spp.	20	Remove (>50% loss)	0	N
Pine spp.	20	Remove (>50% loss)	0	On ground
Pine spp.	20	Remove (>50% loss)	0	
Pine spp.	20	Remove (>50% loss)	0	
Pine spp.	20	Remove (>50% loss)	0	
Pine spp.	20	Remove (>50% loss)	0	On ground
Pine spp.	19	Remove (>50% loss)	0	
Pine spp.	19	Remove (>50% loss)	0	
Pine spp.	19	Remove (>50% loss)	0	
Pine spp.	19	Remove (>50% loss)	0	
Pine spp.	19	Remove (>50% loss)	0	
Pine spp.	19	Remove (>50% loss)	0	
Pine spp.	19	Remove (>50% loss)	0	
Pine spp.	19	Remove (>50% loss)	0	
Pine spp.	19	Remove (>50% loss)	1	
Pine spp.	19	Remove (>50% loss)	0	
Pine spp.	19	Remove (>50% loss)	0	
Pine spp.	19	Remove (>50% loss)	0	
Pine spp.	18	Remove (>50% loss)	0	
Pine spp.	18	Remove (>50% loss)	0	
Pine spp.	18	Remove (>50% loss)	0	Failed
Pine spp.	18	Remove (>50% loss)	0	

Appendix L: Trees Recommended for Removal

Species	DBH	Mitigation	Hangers	Field Notes
Pine spp.	18	Remove (>50% loss)	0	
Pine spp.	18	Remove (>50% loss)	0	
Pine spp.	18	Remove (>50% loss)	0	
Pine spp.	18	Remove (>50% loss)	0	
Pine spp.	18	Remove (>50% loss)	0	
Pine spp.	18	Remove (>50% loss)	0	
Pine spp.	18	Remove (>50% loss)	0	
Pine spp.	18	Remove (>50% loss)	0	
Pine spp.	18	Remove (>50% loss)	0	
Pine spp.	18	Remove (>50% loss)	0	
Pine spp.	18	Remove (>50% loss)	0	
Pine spp.	18	Remove (>50% loss)	0	Top is still attached.
Pine spp.	18	Remove (>50% loss)	0	
Pine spp.	18	Remove (>50% loss)	0	
Pine spp.	18	Remove (>50% loss)	0	
Pine spp.	18	Remove (>50% loss)	0	
Pine spp.	18	Remove (>50% loss)	0	On ground
Pine spp.	18	Remove (>50% loss)	0	On ground
Pine spp.	18	Remove (>50% loss)	0	
Pine spp.	18	Remove (>50% loss)	0	NA
Pine spp.	18	Remove (>50% loss)	0	
Pine spp.	18	Remove (>50% loss)	0	
Pine spp.	18	Remove (>50% loss)	0	
Pine spp.	18	Remove (>50% loss)	0	
Pine spp.	18	Remove (>50% loss)	0	
Pine spp.	18	Remove (>50% loss)	0	
Pine spp.	18	Remove (>50% loss)	0	
Pine spp.	18	Remove (>50% loss)	0	
Pine spp.	18	Remove (>50% loss)	0	On ground
Pine spp.	18	Remove (>50% loss)	0	
Pine spp.	18	Remove (>50% loss)	0	On ground
Pine spp.	18	Remove (>50% loss)	0	On ground
Pine spp.	18	Remove (>50% loss)	0	
Pine spp.	18	Remove (>50% loss)	0	
Pine spp.	18	Remove (>50% loss)	0	
Pine spp.	18	Remove (>50% loss)	0	
Pine spp.	17	Remove (>50% loss)	0	
Pine spp.	17	Remove (>50% loss)	0	
Pine spp.	16	Remove (>50% loss)	0	
Pine spp.	16	Remove (>50% loss)	0	

Appendix L: Trees Recommended for Removal

Species	DBH	Mitigation	Hangers	Field Notes
Pine spp.	16	Remove (>50% loss)	0	
Pine spp.	16	Remove (>50% loss)	0	
Pine spp.	16	Remove (>50% loss)	0	
Pine spp.	16	Remove (>50% loss)	0	
Pine spp.	16	Remove (>50% loss)	0	
Pine spp.	16	Remove (>50% loss)	0	
Pine spp.	16	Remove (>50% loss)	0	
Pine spp.	16	Remove (>50% loss)	0	
Pine spp.	16	Remove (>50% loss)	0	
Pine spp.	16	Remove (>50% loss)	0	
Pine spp.	16	Remove (>50% loss)	0	
Pine spp.	16	Remove (>50% loss)	0	
Pine spp.	16	Remove (>50% loss)	0	
Pine spp.	16	Remove (>50% loss)	0	
Pine spp.	16	Remove (>50% loss)	0	
Pine spp.	16	Remove (>50% loss)	0	On ground
Pine spp.	15	Remove (>50% loss)	0	
Pine spp.	15	Remove (>50% loss)	0	
Pine spp.	15	Remove (>50% loss)	0	
Pine spp.	14	Remove (>50% loss)	0	
Pine spp.	14	Remove (>50% loss)	0	
Pine spp.	14	Remove (>50% loss)	0	
Pine spp.	14	Remove (>50% loss)	0	
Pine spp.	14	Remove (>50% loss)	0	
Pine spp.	14	Remove (>50% loss)	0	
Pine spp.	14	Remove (>50% loss)	0	
Pine spp.	14	Remove (>50% loss)	0	
Pine spp.	14	Remove (>50% loss)	0	
Pine spp.	14	Remove (>50% loss)	0	
Pine spp.	14	Remove (>50% loss)	0	
Pine spp.	14	Remove (>50% loss)	0	
Pine spp.	14	Remove (>50% loss)	0	
Pine spp.	14	Remove (>50% loss)	0	
Pine spp.	14	Remove (>50% loss)	0	On ground
Pine spp.	14	Remove (>50% loss)	0	
Pine spp.	14	Remove (>50% loss)	0	
Pine spp.	14	Remove (>50% loss)	0	
Pine spp.	14	Remove (>50% loss)	0	
Pine spp.	13	Remove (>50% loss)	0	
Pine spp.	12	Remove (>50% loss)	0	
Pine spp.	12	Remove (>50% loss)	0	County H.S.
Pine spp.	12	Remove (>50% loss)	0	
Pine spp.	12	Remove (>50% loss)	0	

Appendix L: Trees Recommended for Removal

Species	DBH	Mitigation	Hangers	Field Notes
Pine spp.	12	Remove (>50% loss)	0	
Pine spp.	12	Remove (>50% loss)	0	
Pine spp.	12	Remove (>50% loss)	0	
Pine spp.	12	Remove (>50% loss)	0	
Pine spp.	12	Remove (>50% loss)	0	
Pine spp.	12	Remove (>50% loss)	0	
Pine spp.	12	Remove (>50% loss)	0	
Pine spp.	12	Remove (>50% loss)	0	
Pine spp.	12	Remove (>50% loss)	0	
Pine spp.	12	Remove (>50% loss)	0	
Pine spp.	12	Remove (>50% loss)	0	
Pine spp.	12	Remove (>50% loss)	0	
Pine spp.	12	Remove (>50% loss)	0	
Pine spp.	12	Remove (>50% loss)	0	
Pine spp.	11	Remove (>50% loss)	0	
Pine spp.	10	Remove (>50% loss)	0	
Pine spp.	10	Remove (>50% loss)	0	
Pine spp.	10	Remove (>50% loss)	0	
Pine spp.	10	Remove (>50% loss)	0	
Pine spp.	10	Remove (>50% loss)	0	Near shed
Pine spp.	8	Remove (>50% loss)	0	
Pine spp.	8	Remove (>50% loss)	0	NA
Pine spp.	8	Remove (>50% loss)	0	
Pine spp.	6	Remove (>50% loss)	0	
Sweetgum	18	Remove (>50% loss)	0	
Sweetgum	16	Remove (>50% loss)	0	
Sweetgum	14	Remove (>50% loss)	0	
Bradford pear	18	Remove (Heartwood)	0	
Dogwood	12	Remove (Heartwood)	0	
Dogwood	9	Remove (Heartwood)	0	
Dogwood	6	Remove (Heartwood)	0	
Elm, American	20	Remove (Heartwood)	0	
Elm, winged	18	Remove (Heartwood)	0	
Laurel oak	50	Remove (Heartwood)	0	Private tree will fail into ROW
Laurel oak	34	Remove (Heartwood)	0	
Laurel oak	34	Remove (Heartwood)	0	
Laurel oak	32	Remove (Heartwood)	0	
Laurel oak	30	Remove (Heartwood)	0	
Laurel oak	21	Remove (Heartwood)	0	
Live oak	70	Remove (Heartwood)	0	
Live oak	50	Remove (Heartwood)	0	
Live oak	48	Remove (Heartwood)	0	

Appendix L: Trees Recommended for Removal

Species	DBH	Mitigation	Hangers	Field Notes
Live oak	48	Remove (Heartwood)	0	
Live oak	47	Remove (Heartwood)	0	
Live oak	46	Remove (Heartwood)	0	
Live oak	40	Remove (Heartwood)	0	
Live oak	39	Remove (Heartwood)	0	
Live oak	38	Remove (Heartwood)	0	
Live oak	35	Remove (Heartwood)	0	
Live oak	35	Remove (Heartwood)	0	
Live oak	33	Remove (Heartwood)	0	
Live oak	33	Remove (Heartwood)	0	
Live oak	29	Remove (Heartwood)	0	
Live oak	18	Remove (Heartwood)	0	
Live oak	18	Remove (Heartwood)	0	
Live oak	16	Remove (Heartwood)	0	
Live oak	15	Remove (Heartwood)	0	
Live oak	10	Remove (Heartwood)	0	
Magnolia spp.	49	Remove (Heartwood)	0	
Magnolia spp.	30	Remove (Heartwood)	0	
Magnolia spp.	24	Remove (Heartwood)	0	
Magnolia spp.	22	Remove (Heartwood)	0	
Oak, other	32	Remove (Heartwood)	0	
Oak, Southern red	47	Remove (Heartwood)	0	
Oak, Southern red	30	Remove (Heartwood)	0	
Oak, Southern red	19	Remove (Heartwood)	0	
Oak, water	41	Remove (Heartwood)	0	
Oak, water	31	Remove (Heartwood)	0	
Oak, water	25	Remove (Heartwood)	0	
Oak, water	10	Remove (Heartwood)	0	
Oak, willow	40	Remove (Heartwood)	0	
Oak, willow	13	Remove (Heartwood)	0	2 trees one has 50percent crown loss
Other	18	Remove (Heartwood)	0	
Other	15	Remove (Heartwood)	0	
Other	11	Remove (Heartwood)	0	
Pecan	28	Remove (Heartwood)	0	
Pecan	22	Remove (Heartwood)	0	
Pine spp.	32	Remove (Heartwood)	0	
Pine spp.	30	Remove (Heartwood)	0	
Pine spp.	30	Remove (Heartwood)	0	
Pine spp.	28	Remove (Heartwood)	0	Failed
Pine spp.	27	Remove (Heartwood)	0	
Pine spp.	25	Remove (Heartwood)	0	
Pine spp.	23	Remove (Heartwood)	0	

Appendix L: Trees Recommended for Removal

Species	DBH	Mitigation	Hangers	Field Notes
Pine spp.	22	Remove (Heartwood)	0	
Pine spp.	20	Remove (Heartwood)	0	
Pine spp.	20	Remove (Heartwood)	0	
Pine spp.	20	Remove (Heartwood)	0	Failed
Pine spp.	18	Remove (Heartwood)	0	
Pine spp.	18	Remove (Heartwood)	0	
Pine spp.	17	Remove (Heartwood)	0	
Pine spp.	16	Remove (Heartwood)	0	
Pine spp.	16	Remove (Heartwood)	0	
Pine spp.	15	Remove (Heartwood)	0	Failed
Pine spp.	14	Remove (Heartwood)	0	
Sweetgum	18	Remove (Heartwood)	0	

Appendix M: Stumps Requiring Removal

Species	DBH	Mitigation	Hangers	Field Notes
Live oak	25	Stump (Not Attached)	0	
Oak, other	32	Stump (Not Attached)	0	
Oak, other	28	Stump (Not Attached)	0	
Oak, other	27	Stump (Not Attached)	0	
Oak, other	25	Stump (Not Attached)	0	
Oak, other	20	Stump (Not Attached)	0	
Pine spp.	32	Stump (Not Attached)	0	
Pine spp.	32	Stump (Not Attached)	0	
Pine spp.	32	Stump (Not Attached)	0	
Pine spp.	30	Stump (Not Attached)	0	
Pine spp.	30	Stump (Not Attached)	0	
Pine spp.	28	Stump (Not Attached)	0	
Pine spp.	28	Stump (Not Attached)	0	
Pine spp.	28	Stump (Not Attached)	0	
Pine spp.	28	Stump (Not Attached)	0	
Pine spp.	28	Stump (Not Attached)	0	
Pine spp.	28	Stump (Not Attached)	0	
Pine spp.	28	Stump (Not Attached)	0	
Pine spp.	28	Stump (Not Attached)	0	
Pine spp.	28	Stump (Not Attached)	0	
Pine spp.	28	Stump (Not Attached)	0	
Pine spp.	25	Stump (Not Attached)	0	
Pine spp.	24	Stump (Not Attached)	0	
Pine spp.	24	Stump (Not Attached)	0	
Pine spp.	24	Stump (Not Attached)	0	
Pine spp.	18	Stump (Not Attached)	0	
Pine spp.	18	Stump (Not Attached)	0	
Pine spp.	16	Stump (Not Attached)	0	
Pine spp.	16	Stump (Not Attached)	0	
Pine spp.	16	Stump (Not Attached)	0	
Pine spp.	16	Stump (Not Attached)	0	
Pine spp.	12	Stump (Not Attached)	0	
	<Null	Stump (Uprooted)	0	
Cherry-laurel	24	Stump (Uprooted)	0	
Cherry-laurel	18	Stump (Uprooted)	0	
Hackberry / Sugarberry	40	Stump (Uprooted)	0	
Hackberry / Sugarberry	18	Stump (Uprooted)	0	On ground
Hickory spp.	20	Stump (Uprooted)	0	
Hickory spp.	20	Stump (Uprooted)	0	
Hickory spp.	20	Stump (Uprooted)	0	
Laurel oak	40	Stump (Uprooted)	0	On ground
Laurel oak	35	Stump (Uprooted)	0	
Laurel oak	30	Stump (Uprooted)	0	
Live oak	<Null	Stump (Uprooted)	0	
Live oak	50	Stump (Uprooted)	0	
Live oak	45	Stump (Uprooted)	0	
Live oak	44	Stump (Uprooted)	0	

Appendix M: Stumps Requiring Removal

Species	DBH	Mitigation	Hangers	Field Notes
Live oak	39	Stump (Uprooted)	0	
Live oak	36	Stump (Uprooted)	0	
Live oak	34	Stump (Uprooted)	0	
Live oak	28	Stump (Uprooted)	0	
Live oak	28	Stump (Uprooted)	0	
Live oak	28	Stump (Uprooted)	0	
Live oak	27	Stump (Uprooted)	0	
Live oak	24	Stump (Uprooted)	0	
Live oak	24	Stump (Uprooted)	0	
Magnolia spp.	35	Stump (Uprooted)	0	
Magnolia spp.	30	Stump (Uprooted)	0	Yellow jackets
Oak, other	<Null>	Stump (Uprooted)	0	
Oak, other	32	Stump (Uprooted)	0	
Oak, other	30	Stump (Uprooted)	0	
Oak, other	26	Stump (Uprooted)	0	
Oak, other	25	Stump (Uprooted)	0	
Oak, other	25	Stump (Uprooted)	0	
Oak, other	25	Stump (Uprooted)	0	
Oak, other	25	Stump (Uprooted)	0	
Oak, other	16	Stump (Uprooted)	0	
Oak, Southern red	32	Stump (Uprooted)	0	
Oak, Southern red	30	Stump (Uprooted)	0	
Oak, Southern red	30	Stump (Uprooted)	0	
Oak, Southern red	13	Stump (Uprooted)	0	
Oak, water	50	Stump (Uprooted)	0	
Oak, water	38	Stump (Uprooted)	0	
Oak, water	30	Stump (Uprooted)	0	
Oak, willow	40	Stump (Uprooted)	0	
Other	24	Stump (Uprooted)	0	
Pecan	32	Stump (Uprooted)	0	
Pecan	30	Stump (Uprooted)	0	
Pecan	28	Stump (Uprooted)	0	
Pine spp.	<Null>	Stump (Uprooted)	0	
Pine spp.	<Null>	Stump (Uprooted)	0	
Pine spp.	<Null>	Stump (Uprooted)	0	
Pine spp.	<Null>	Stump (Uprooted)	0	
Pine spp.	<Null>	Stump (Uprooted)	0	
Pine spp.	<Null>	Stump (Uprooted)	0	
Pine spp.	37	Stump (Uprooted)	0	
Pine spp.	31	Stump (Uprooted)	0	
Pine spp.	30	Stump (Uprooted)	0	
Pine spp.	28	Stump (Uprooted)	0	
Pine spp.	25	Stump (Uprooted)	0	

Appendix M: Stumps Requiring Removal

Species	DBH	Mitigation	Hangers	Field Notes
Pine spp.	25	Stump (Uprooted)	0	
Pine spp.	25	Stump (Uprooted)	0	
Pine spp.	25	Stump (Uprooted)	0	
Pine spp.	25	Stump (Uprooted)	0	
Pine spp.	25	Stump (Uprooted)	0	
Pine spp.	25	Stump (Uprooted)	NA	
Pine spp.	25	Stump (Uprooted)	0	
Pine spp.	25	Stump (Uprooted)	0	
Pine spp.	25	Stump (Uprooted)	0	
Pine spp.	25	Stump (Uprooted)	0	
Pine spp.	24	Stump (Uprooted)	0	
Pine spp.	24	Stump (Uprooted)	0	
Pine spp.	24	Stump (Uprooted)	0	
Pine spp.	24	Stump (Uprooted)	0	
Pine spp.	24	Stump (Uprooted)	0	
Pine spp.	24	Stump (Uprooted)	0	
Pine spp.	22	Stump (Uprooted)	0	
Pine spp.	19	Stump (Uprooted)	0	
Pine spp.	16	Stump (Uprooted)	0	
Pine spp.	12	Stump (Uprooted)	0	
Pine spp.	12	Stump (Uprooted)	0	
Pine spp.	12	Stump (Uprooted)	0	
Sycamore	34	Stump (Uprooted)	0	